

# LTPR pattern positioning instructions

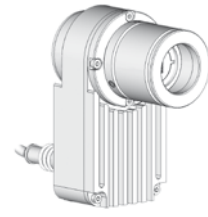
By default, LTPR pattern projector units are provided without any projection pattern inside. A PTPR series projection pattern can be easily mounted inside the unit by the user following these instructions, which apply to the following:



LTPRHP3W series

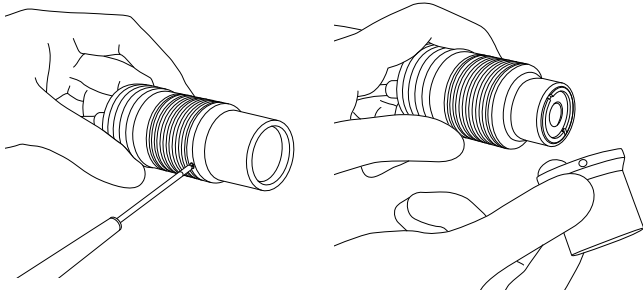


LTPRXP series

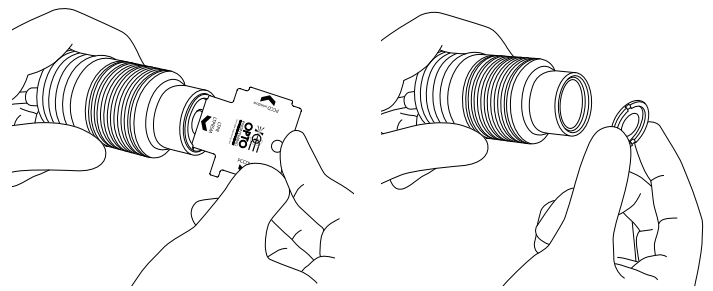


LTPRUP series

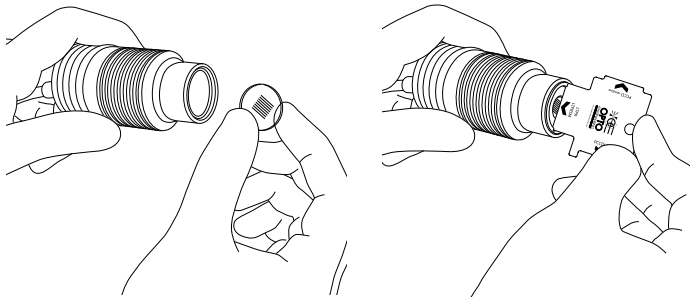
**!** Make sure to perform this procedure in a clean, non-dusty environment in order to prevent dust or other particles from entering the lens.



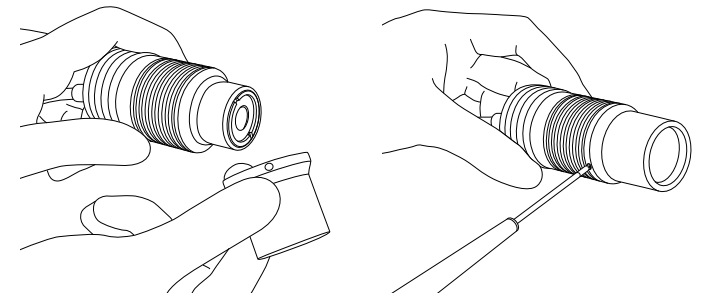
- 1 Loosen the socket head set-screws by means of an M1.5 or M2 Allen key and remove the C-mount adaptor



- 2 Remove the retaining ring using the provided PTOOL instrument.

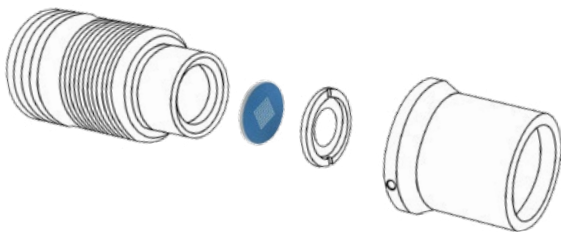


- 3 Fix the projection pattern in place by screwing the retaining ring with the provided PTOOL.



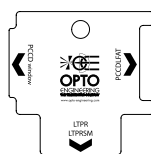
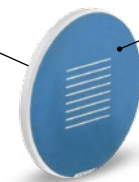
- 4 Insert back in place the C-mount adaptor and fix it by tightening the socket head set-screws with an M1.5 Allen key

## Projection pattern orientation



Uncoated surface towards light source

Coated surface towards projection lens



Use the provided PTOOL instrument to remove/insert each component (the correct side is correspondingly labeled).



OPTO ENGINEERING

# LTPR pattern positioning instructions

---

[www.opto-engineering.com](http://www.opto-engineering.com)

V2.1